

# NATIONAL CHURCHES

---

TRUST  
Cherish



16 November 2023



NATIONAL  
CHURCHES  
TRUST

WELCO

We want to keep  
wonderful churches  
open and in use

Yours for  
good

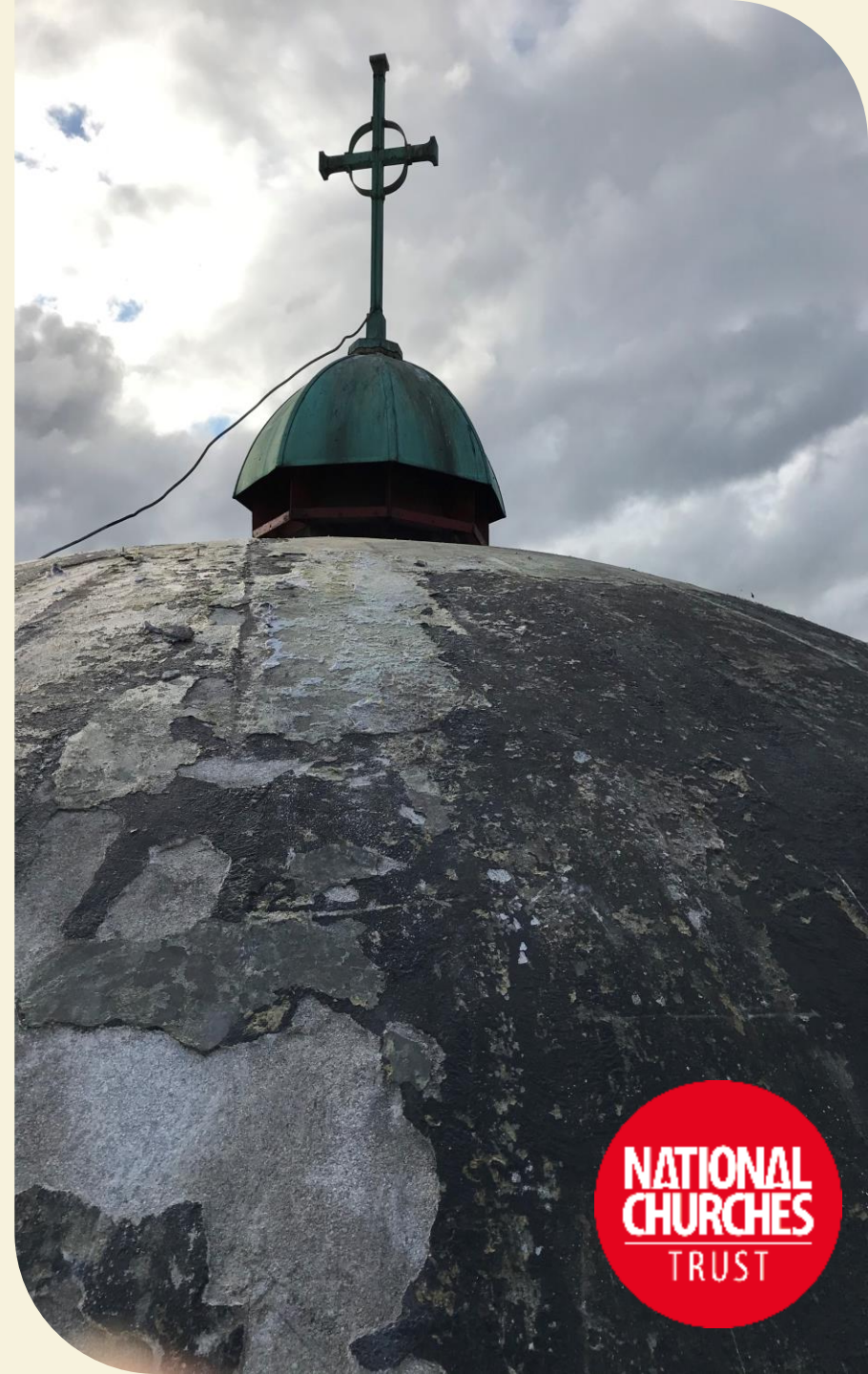
# WHO ARE WE?

The national charity that helps keep the UK's wonderful collection of church buildings well maintained, valued and used.

## SOME RECENT

## ACHIEVEMENTS:

- House of Good – social and economic value of church buildings is worth around £55 billion
- HSF Funding - £3.6 million for 32 churches
- NLHF Projects – Almost £500k Treasure Ireland and £1.9m award for Cherish



# NEW STRATEGY

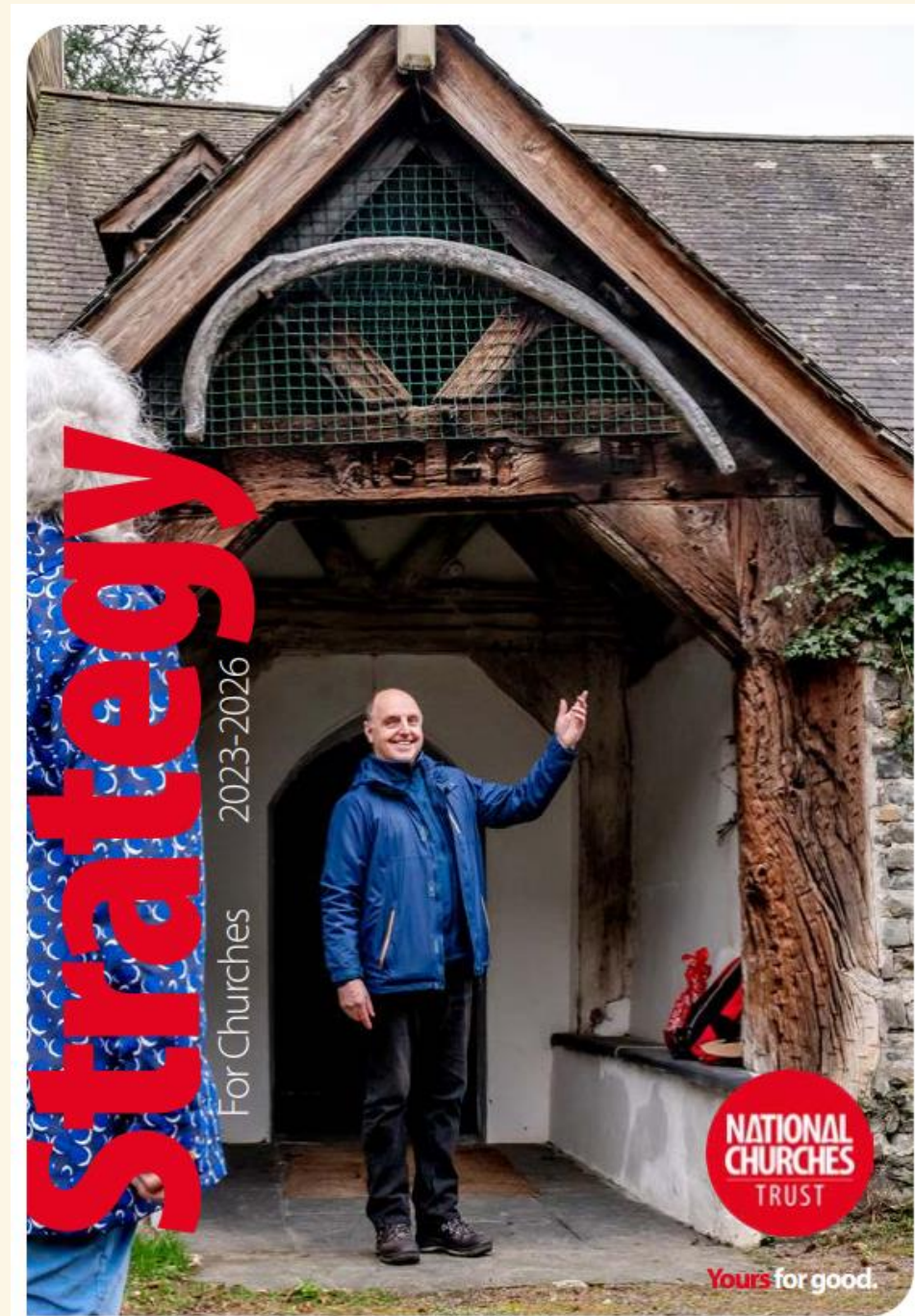
For Churches 2023-2026

Our **vision** is that church buildings across the UK are well maintained, open for everyone, sustainable and valued

Our **mission** is to help keep the UK's wonderful collection of church buildings well maintained, valued and used

We will:

- Be straightforward
- Provide Support
- Join forces
- Drive change



# HOW WE ACHIEVE OUR GOALS

## Build Up:

- Grants for repairs, maintenance, facilities
- Advice, guidance and training

## Open Up:

- Church Membership
- Help churches meet community needs
- Support church tourism

## Speak Up:

- Communicate the value of churches
- Research and evidence-based data



# CHERISH

- £1.9 million National Lottery Heritage Fund grant
- To run until 2026
- 3 dedicated support officers based in Scotland, North-West England and Wales/Cymru,
- A range of training, resources and mentoring
- Grants between £500 and £10,000 for maintenance and repairs



# CHERISH SUPPORT



## Scotland

Support for places of worship in Scotland



## Greater Manchester, Lancashire and Cumbria

Support for places of worship in North West England



## Wales / Cymru

Support for places of worship in Wales



# CHERISH SCOPE AND AIMS

To support capacity building and reduce heritage at risk in the Places of Worship sectors in Scotland, Wales and North-West England

1: Project Management

2: Grants

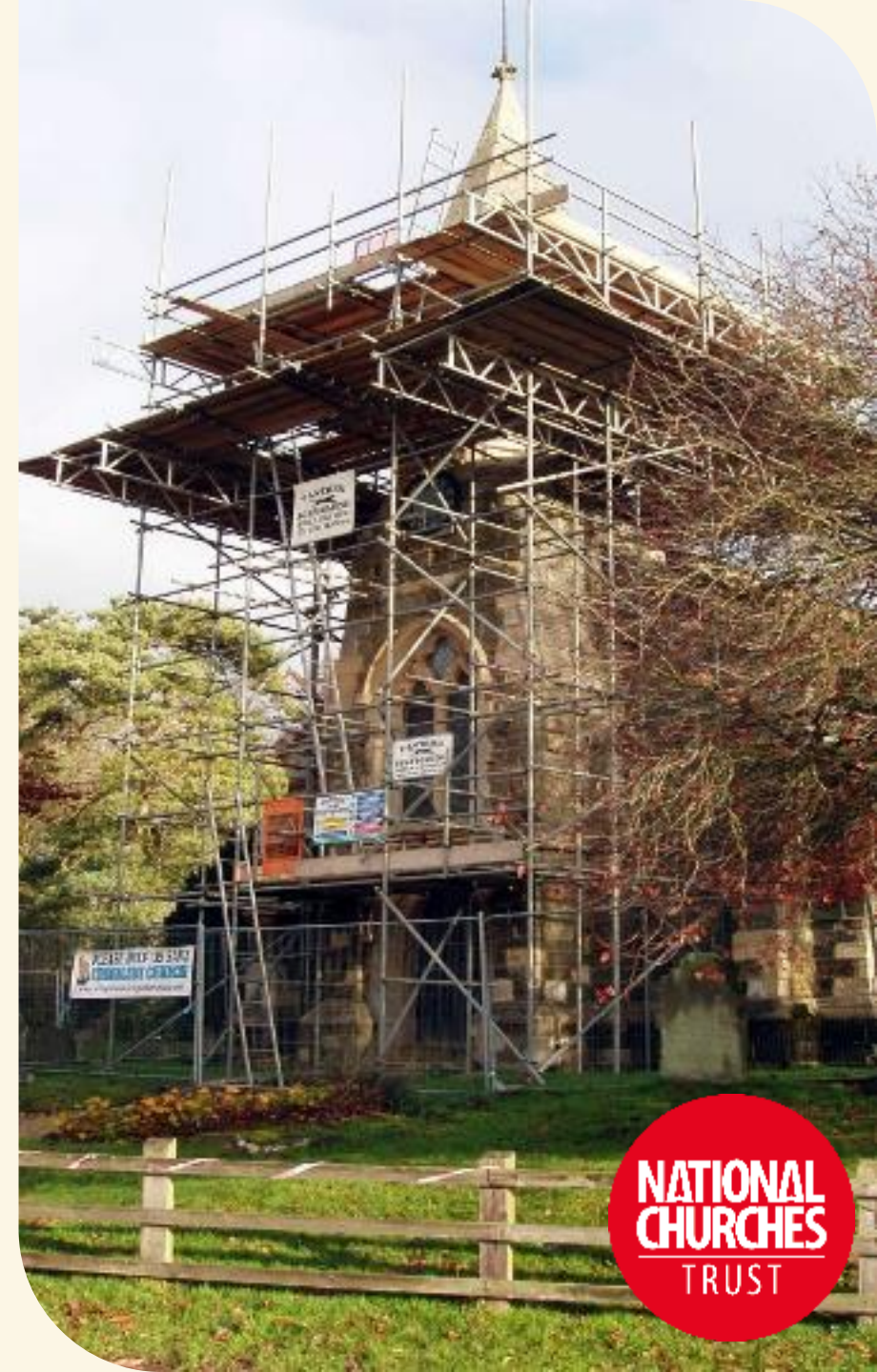
3: Tourism

4: Mentoring

5: Training

6: Forums

7: Digital Asset Bank





# BENEFITS TO CHURCHES

- Access to 1 to 1 support
- Access to specialist knowledge, advice and training, resources
- More likely to know about NCT
- Build awareness and appreciation
- Be more open / attract more visitors
- Promotion by NCT through social networks, press and publicity
- Denominations may refine approaches e.g. following feedback, lessons learnt and engagement through Forums
- Forum to network and share best practice



# LESSONS FROM TREASURE IRELAND

Positives:

- Country-based officer with time to engage 1 to 1
- Grants in combination with other support
- Steering Groups Forums give places to share best practice
- Mix of online and in person events work well
- Supporting improvements to Ecclesiastical Exemption
- Increased funding into church buildings in Northern Ireland

What we're working on:

- Need for dedicated Project Manager
- Separate Grants Committee?



# 2022 IN NUMBERS

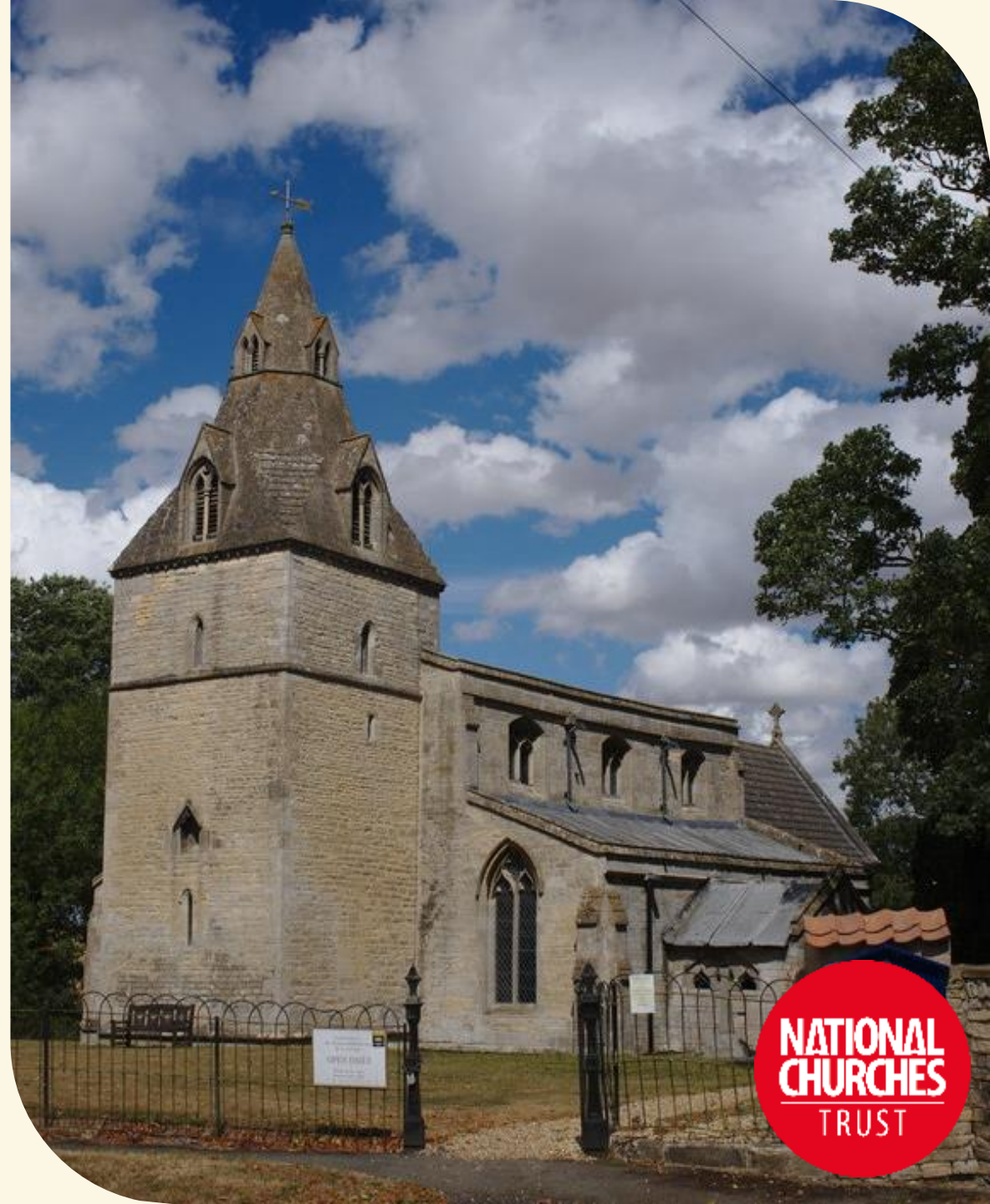
## - NLHF

National Lottery enquiries/applications to the Heritage Fund from Christian Faith Based Organisations in 2022/23:

North-West England: 11 enquiries; 2 applications

Scotland: 4 enquiries; 0 applications

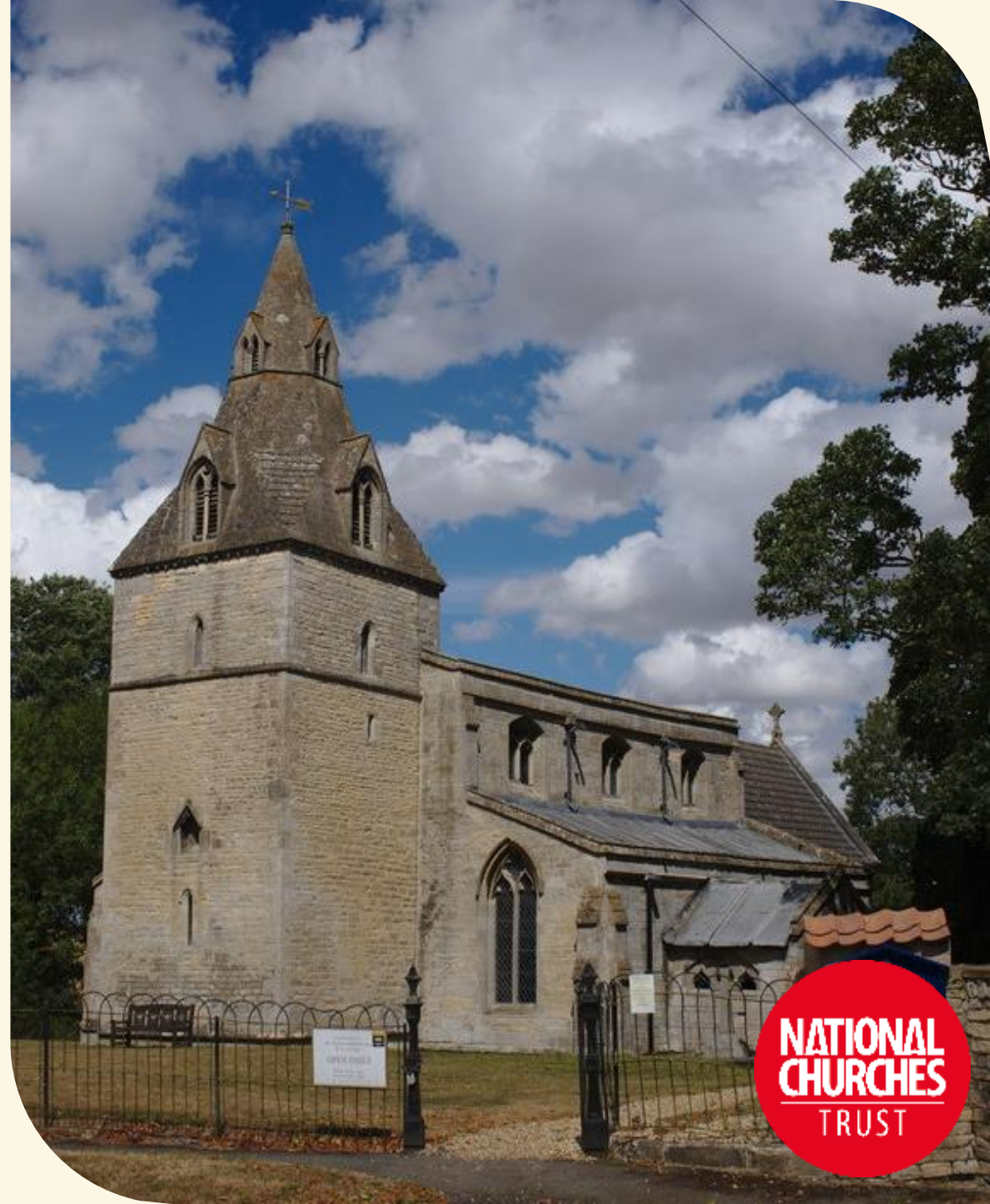
Wales/Cymru: 7 enquiries, 5 applications



# 2022 IN NUMBERS - NCT

In 2022 we had 35 applications from the Cherish countries and regions for grants up to £10,000.

Of these, 17 applications were from the North-West . Out of the 17 applications, 14 grants of up to £10,000 were made across a spread of denominations.



**NATIONAL  
CHURCHES**  
TRUST

**NATIONAL  
CHURCHES  
TRUST**

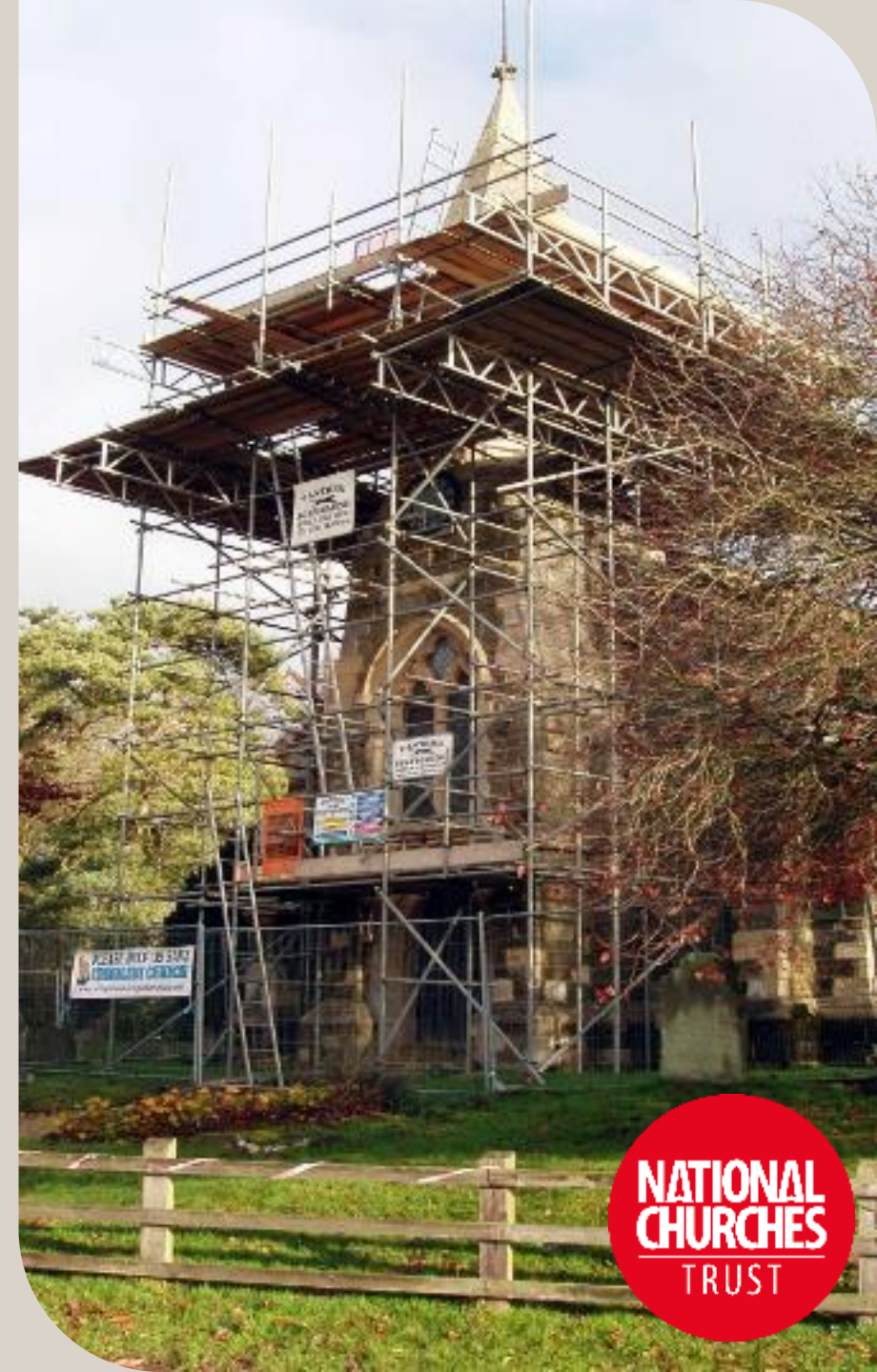
**GRANTS**



# CHERISH GRANTS

- £500 - £10k
  - Apply through our small (£500-£5k) or medium (£5-10k) grants application systems
  - Maintenance/repair projects
  - Project development up to RIBA Stage 1
  - A small number of community development/alternative use projects?

N.B. Churches in the Cherish areas are still eligible to apply for large grants via our substantive grants programme. Denominations with concerns about accepting Lottery money should speak to us about which grants to apply for.



# ELIGIBILITY

- ✓ Located in the North-West (Cumbria, Lancashire, Greater Manchester), Wales/Cymru or Scotland
- ✓ Originally built as a place of worship (over 30 years ago) and open for regular public worship
- ✓ Work not yet started
- ✓ At least 50% funds raised
- ✓ Open at least 100 days per year – or within 1 year of completion
- ✓ Leading qualified professional with conservation accreditation if listed
- ✓ Necessary permissions and multiple quotes in place



# WHAT WE CAN FUND

- Repairs to the building and urgent maintenance
- Project development up to RIBA Planning stage 1
- Installation of new facilities (kitchens and toilets)
- We cannot fund:
  - Heating, lighting, electricity or audio-visual equipment
  - Work to fixtures and fittings e.g. clocks, organs, bells, monuments
  - Restoration of decorative features, e.g. wall paintings, stained glass





# SMALL CHERISH GRANTS

- Awards of £500 to £5,000
- Maintenance and repair projects up to £20,000
- E.g. small roof repairs, repointing, repairs to rainwater goods
- Work identified in recent Five Year Inspection Report/survey report
- 2 quotes and 50% funding in place
- Permissions
- Support from lead professional (CA)
- Maintenance plan
- Deadline every 2 months



**NATIONAL  
CHURCHES  
TRUST**

# MEDIUM CHERISH GRANTS (Project Development)

- Awards of between £5,000 and £10,000
- Project development up to RIBA Stage 1
- E.g. feasibility studies, option appraisals, detailed reports to better understand an issue
- 2 quotes and 50% funds for this element
- Support from lead professional (CA)
- 3 decision rounds



# MEDIUM CHERISH GRANTS

- **(Repair)** Awards of between £5,000 and £10,000
- Essential repairs costing £20,000 to £80,000
- E.g. roof repairs, masonry repairs, rainwater goods – ideally identified in a recent Five Year Inspection

Report/survey

- 2 quotes and 50% funds in place
- Permissions
- Conservation accredited lead professional
- 3 decision rounds per year



**NATIONAL  
CHURCHES  
TRUST**

# SCORING CRITERIA



# APPLICATION PROCESS

Application is submitted

Application is assessed internally by NCT staff

Applications go to grants committee for final decisions

Formal decision letter by email



A red circular logo with the text "NATIONAL CHURCHES TRUST" in white, bold, sans-serif capital letters. The logo is positioned in the upper left corner of the image.

NATIONAL  
CHURCHES  
TRUST

A photograph of the interior of a Gothic church. The scene is dominated by a large, multi-paned stained glass window on the left, which is brightly lit. Below the window is an ornate altar with a golden tabernacle. In the foreground, two men are seen from behind, looking towards the altar. To the right, there are dark wooden pews with intricate Gothic-style metalwork railings. The architecture features high, pointed arches and a dark wooden ceiling. The overall atmosphere is one of historical grandeur and religious solemnity.

# CHURCHES

# MAINTENANCE SUPPORT

- Maintenance signposting and support
- Maintenance plan templates
- Maintenance videos
- Training – in person and online
- Funding and support organisations database
- A Five Point Guide to developing your project
- Specialist Skills Directory



# CHURCH TOURISM

## SUPPORT

- Visitor Counters
- Training – in person and online
- Support to diversify audiences; cyclists, walkers etc
- Partnerships with regional and national organisations
- Promotional campaigns
- UK's largest church tourism hub : 4,000 pages
- Inclusion in themed stories and church trails
- Help with planning bookable group visits
- Inclusion in projects and research

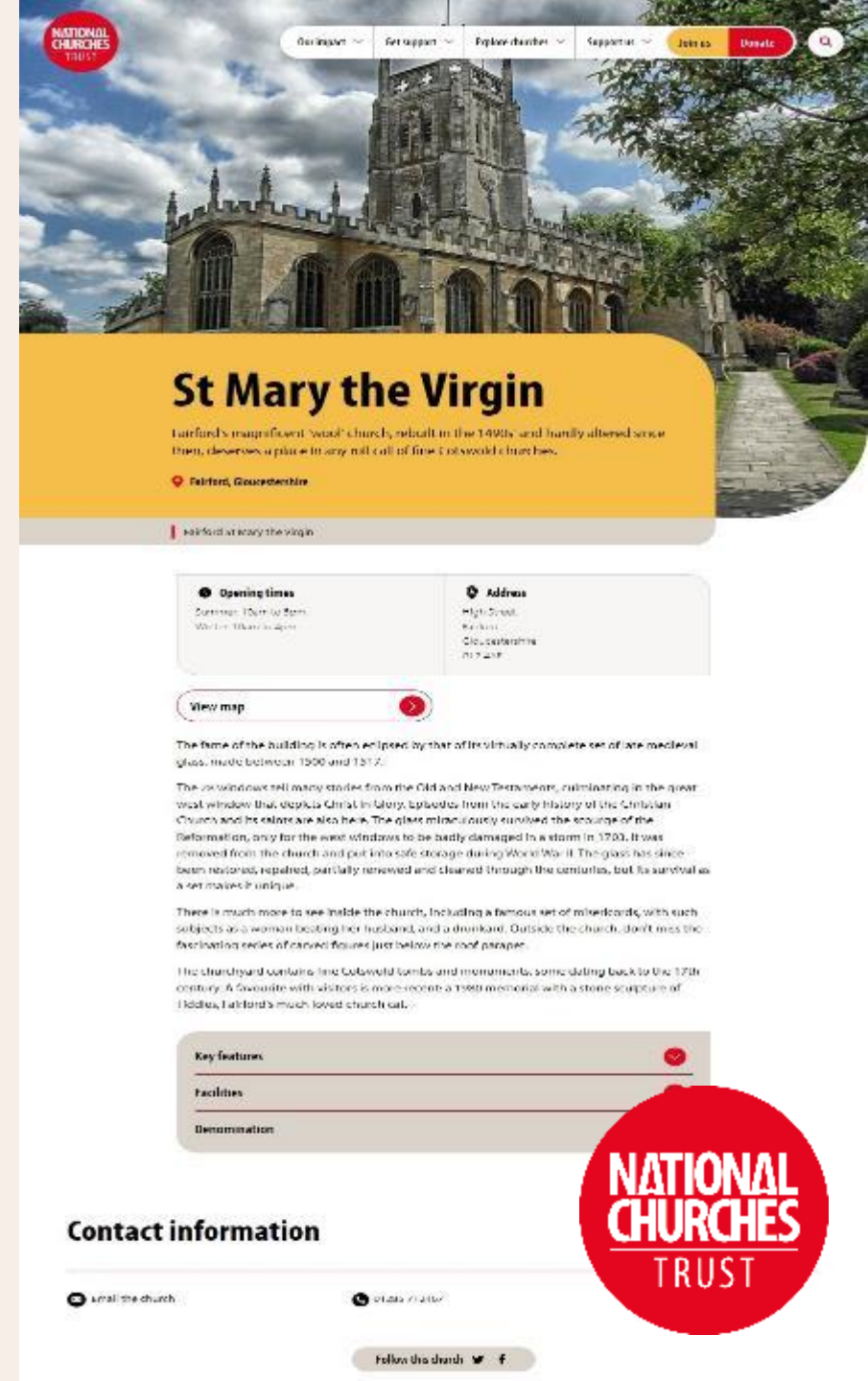




# CHURCH MEMBERSHIP

Grantee churches receive two years free Church member+ worth £96

- Understand the issues affecting your church
- Represent your needs at a national level
- Create a network to share inspiration and best practice
- Provide advice, support, training and toolkits
- Include you in engaging storytelling, PR, marketing campaigns and tourism promotion
- Create quality tourism opportunities for churches



# THE NATIONAL CHURCH AWARDS

- Friends of the National Churches Trust Award
- Nayler Awards for Excellence in Church Maintenance
- Marsh Church & Community Heroes Awards
- Open for Visitors Award
- Church of the Year

This year's award ceremony was held on 6 November 2023



**NATIONAL  
CHURCHES**  
TRUST

# TRAINING & WORKSHOPS

We run a selection of training courses and workshops to help volunteers look after their churches.

## Grants

- Introduction to grants programme
- Funding maintenance and urgent repairs

## Tourism

- Create a perfect welcome and tell your story
- Promoting your church to visitors
- Keeping your church open with Ecclesiastical Insurance

NATIONAL  
CHURCHES  
TRUST



A red circular logo with the text "NATIONAL CHURCHES TRUST" in white, sans-serif font. The text is arranged with "NATIONAL" and "CHURCHES" on the top line, "TRUST" on the bottom line, and a thin white horizontal line separating "CHURCHES" and "TRUST".

NATIONAL  
CHURCHES  
TRUST

# ENG AGE

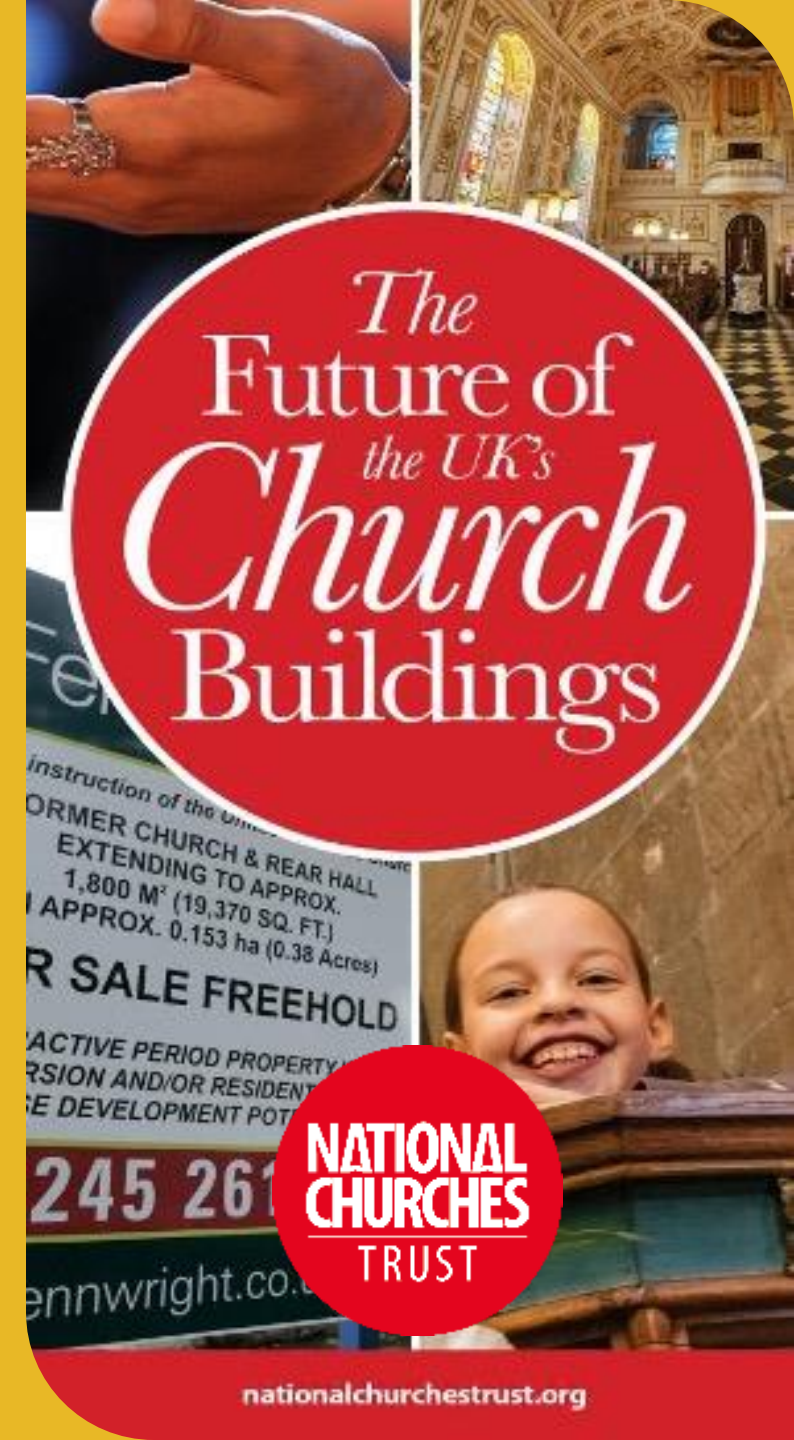


# SPEAKING ON YOUR BEHALF

Our Communications Team ensures the right information gets to the right people at the right time

- Creates topical campaigns to Lobby MPs and influential organisations on church issues
- Active PR in national and specialist media
- Initiates surveys and reports
- Daily news updates via twitter (X)
- Engaging content on social media
- Monthly e-newsletters
- News and blog postings on website

[nationalchurchestrust.org/impact](https://nationalchurchestrust.org/impact)



# OUR FRIENDS

Becoming a Friend is one way individuals can support us in the work that we do.

- Annual membership from £40
- Two newsletters per year plus e-bulletins
- Annual Review detailing our work
- Participation in Friends Vote Grant
- Joining gift '*Treasure of English Churches*'
- Invitation to select events, Carol Concert and tours

[nationalchurchestrust.org/friends](https://nationalchurchestrust.org/friends)



**NATIONAL  
CHURCHES  
TRUST**

# KEEP CONNECTED

We want to hear about what you are doing so please register for our monthly e-news and share your news with us on social media.



@nationalchurchestrust



nationalchurchestrust



NatChurchTrust



National Churches Trust

[Sign up for our e-newsletter](#)

**National Churches Trust**  
Published by Hootsuite · 28 March at 12:00 · 🌐

In October we received £2million from the Government's Culture Recovery Fund. This will help repair 15 churches and also remove eight of them from the Historic England 'Heritage at Risk' Register, securing them for future generations.

The Quaker Friends Meeting House in Kendal is just one of the places we are helping. View all the churches receiving grant: <https://www.nationalchurchestrust.org/.../%25C2%25A32...>

#HereForCulture Historic England Department for Digital, Culture, Media and Sport



**Quaker Tapestry**  
18 March at 14:17 · 🌐

Check out the progress on our new roof!

Our general manager Naomi has been up on the roof this morning to look at the amazing progress on this incredible project which is due to be completed by the end of April.

The complex double-pitched roof on our Grade II\* listed Georgian meeting house is being completely stripped and re-laid. New breathable insulation is being installed which will protect against damp build-up and prevent heat from escaping, leading to both lower energy bills and a reduced carbon footprint for the museum and meeting.

Additionally, we are installing solar panels on the inner pitches of the roof, thus preserving the historic integrity of the building from the outside, but also allowing us to further lower our impact.

The project has been generously supported numerous donors including a significant contribution from the National Churches Trust who have been instrumental in the last few days. Look out for the upcoming short film on their social channels.

If you would like to contribute towards the costs of our work you can do so here: <https://www.quaker-tapestry.co.uk/product/make-a-donation/>

#QuakerTapestryMuseum #CumbrianMuseums #VisitKendal #LakeDistrict #GreenerMuseums #NationalChurchesTrust #Renovation #NewRoof



You and 86 others · comment

Like Comment Share

# TEAM CONTACT

## DETAILS

Project Manager – Bea Prosser-Snelling  
[beatrice.prosser@nationalchurchestrust.org](mailto:beatrice.prosser@nationalchurchestrust.org)

CSO North-West – Matthew Maries  
[matthew.maries@nationalchurchestrust.org](mailto:matthew.maries@nationalchurchestrust.org)

CSO Scotland – Karen Hind:  
[karen.hind@nationalchurchestrust.org](mailto:karen.hind@nationalchurchestrust.org)

CSO Wales – Gareth Simpson:  
[gareth.simpson@nationalchurchestrust.org](mailto:gareth.simpson@nationalchurchestrust.org)

